

Welcome to Pearson EasyBridge Plus!

Everett Public Schools uses a variety of Pearson Products for different content areas. In order for teachers and students to be automatically added and updated nightly and for students to access a wide variety of Pearson products through one point of access, teachers and students use a URL address that is unique to Everett Public Schools.

[Pearson EasyBridge](#) – One log in – then it is a portal to Pearson’s SuccessNet Plus platform and products.

This link to **Pearson** is located in Chrome under Bookmarks>*Managed Bookmarks*, on the EPS Google Apps shortcut page and on Internet Explorer favorites. There is also a link on the Grades&More page to Pearson as well.

Logging in* to a district Windows computer onsite within our network -automatically logs you in to [Pearson](#). Chromebooks still require using a user name and password.

Log in for both staff and students is the same user name and password used to log onto a district computer.

*Specialists, administrators and other staff who do not have assigned classes in eSchool– you need to request access by emailing LMSStaff@everettsd.org.

Step One: Teachers add products to their classes.

Step Two: Staff and students log in to Pearson EasyBridge and will find SuccessNet Plus in the upper right of the screen when they log in. They will select SuccessNet Plus to access online curriculum

Where do we find the link to get to Pearson EasyBridge for both students and teachers? (Screenshots included on next pages)

Different routes to same place

1. In Internet Explorer – the shortcut to Pearson has been updated to link to [Pearson](#)
2. In Chrome select Bookmarks>Managed Bookmarks>Pearson
3. Grades&More site has added a [Curriculum and Instruction Tools](#) page with a linked icon
4. EPS Google Apps Shortcuts [Pearson](#)
5. On the Student tools page.

NOTE: Chromebooks and any computers used at home or outside the district network- require a full log in – entering a student ID and network password. This is the same password used to log on to the computer. Links to Pearson EasyBridge are on the Grades&More page.

- At home set-up may require students to add everett\ID# as log in name

Q: How do I set up my classes to start the year?

A: As you begin a class each semester you will Assign Product

1. Log in to Pearson EasyBridge- [Pearson](#)
2. Navigate to a Current classes (if before a term, go to Future classes)
3. Select Assign Product
4. Find the right product on Pearson Product list
5. Check all boxes that apply to the course and scroll to bottom – make certain to hit SAVE
6. Navigate to SuccessNet platform through link on right of screen.

Step-by-step instructions available below.

Expanded Directions



EasyBridge Plus Login - Currently Everett uses Pearson EasyBridge Plus in elementary, middle and high schools.

K-5 Pearson SuccessNet enVision Mathematics
6-12 Pearson SuccessNet Algebra, Geometry, Algebra II
9-12 Pearson SuccessNet AP Spanish
6-12 Pearson Realize History

Link here to Everett Public Schools Pearson access point - [Pearson](#)

- Working on teacher, lab or classroom computers – (any district computer that is not a Chromebook) - will automatically log you into Pearson
 - o Just click the link – and you are logged in
 - o Students and teachers are automatically signed in to Pearson – no password required
- Chromebooks or personal devices – students or teachers will need to still log in through [Pearson](#)
 - o User name and password are the same as your network log in (the way you log into computer)

If you have classes in eSchool – once you log in, you will see Classes & Products. A list of classes you are teaching should appear.

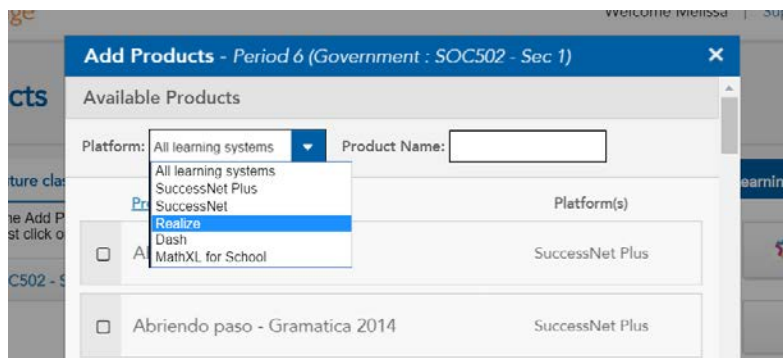
The screenshot displays the Pearson EasyBridge web application. At the top, the Pearson EasyBridge logo is on the left, and navigation links for 'Support', 'Sign Out', and a 'Plus' button are on the right. The main heading is 'Classes & Products' for the '2016 School Year'. Below this, there are three tabs: 'Current classes', 'Future classes', and 'Past classes'. The 'Current classes' tab is active, showing a table with one class: 'Period 6 (Government : SOC502 - Sec 1)'. To the right of this class name are two buttons: 'Student Roster' and 'Add Products'. A text box above the table explains: 'To add content to a class, click the Add Products button to the right of the class name. Content you've already added to a class is shown under the class name. Just click on a course to access it!'. On the right side of the interface, there is a 'Learning systems' sidebar containing three buttons: 'Pearson SuccessNet', 'SuccessNet Plus', and 'PEARSON realize'. The bottom of the page has a dark blue footer with the 'PEARSON' logo on the left and 'ALWAYS LEARNING' on the right.

For each semester you will need to Add Products. **Look to the far right – select + Add Products**

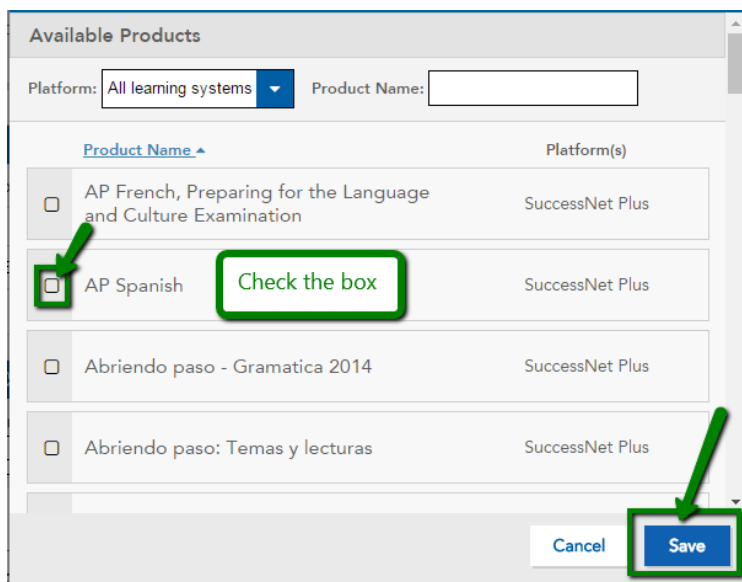
Add Products

(Once you add products this will change to Manage Products)

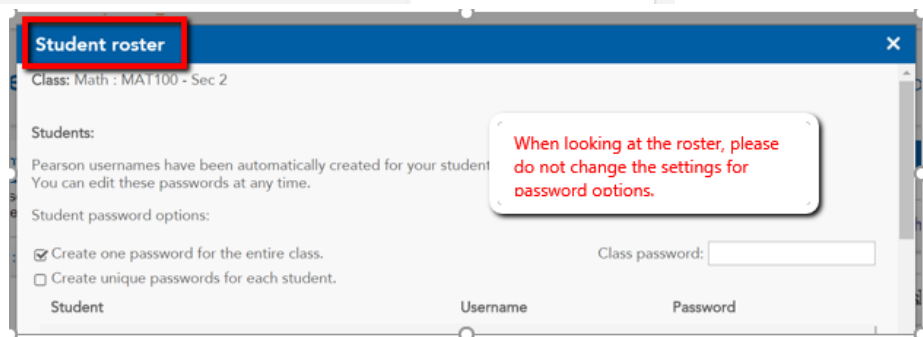
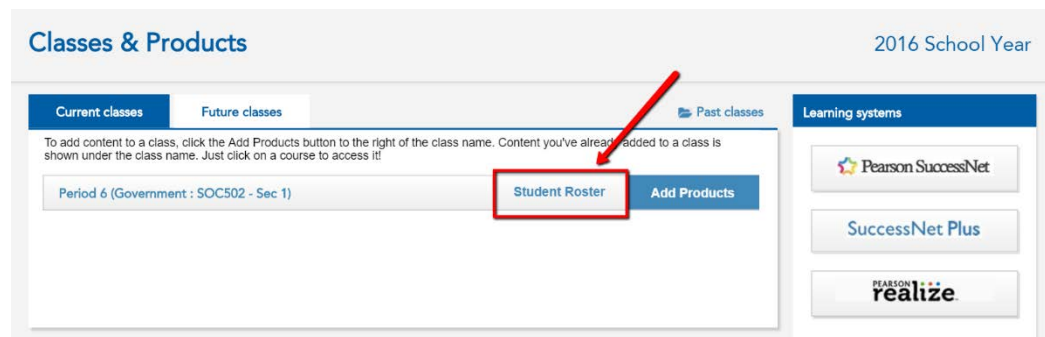
You will see a list of all products associated with Everett Public Schools. Select **SuccessNet Plus** from the Learning Systems list to narrow your selections.



Select your product and **SAVE**



If you want to see if your classes have been updated to the current year, you can check the Student Roster.



Once you have added the product – you can navigate to Pearson SuccessNet Plus using the left icon or selecting the product name.

Realize is the platform for most social studies

SuccessNet Plus is the platform for AP French and AP Spanish



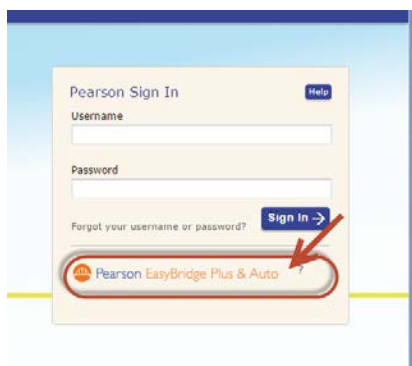
Success net is the platform for mathematics

Logging in using Pearson SuccessNet Plus sign in – for teachers and students with classes scheduled in eSchool.

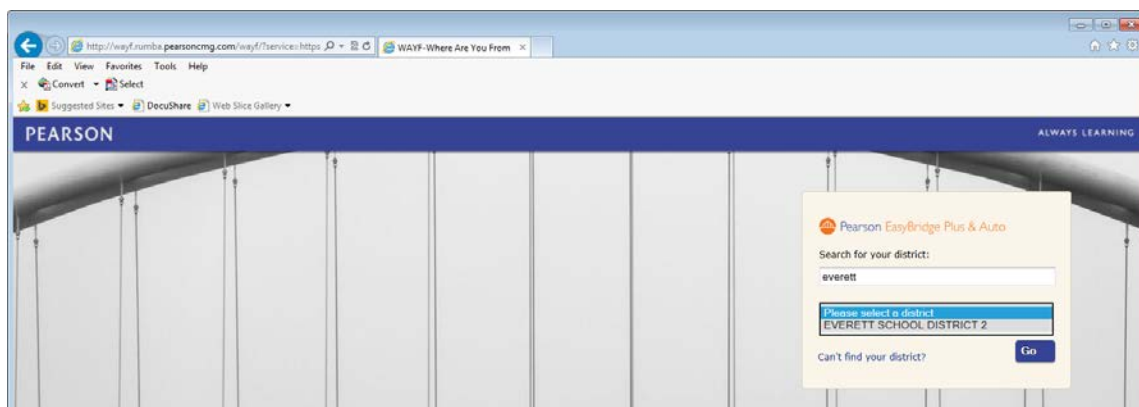
*Teachers -the easiest way to login from home is to use your remote access.

Students and teachers logging in from computers outside the can use the district website to find the link to Pearson SuccessNet. This can be done by logging in EPS Google Apps shortcut page; going to the Grades&More webpage and using the link to Pearson from this page.

You must first select Pearson EasyBridge Plus & Auto



Then type in everett to the Search for your district field. This will show Everett School District 2 in the pull down menu – select the district.



You then will need to enter your district network user name and password.

Depending on your home computer set up, it is possible you may need to use only your username and password. OR, you may need to type in Everett\ID# for user name. This varies from home to home.